

Connect

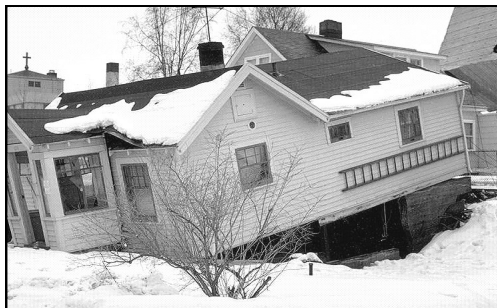
With Sunny Place Church of God

August, 2018

Jesus Christ: A Firm Foundation

A FIRM FOUNDATION

When we think about the word "foundation" the first thoughts that initially come to mind refer to a building of some sort. The foundation is the strongest part of the building and upon which all of the upper structure relies. The foundation had better be extremely solid for the rest of the building to rest upon it. If not, the upper portion of the building is in serious jeopardy. One slight move or failure of the foundation and it is possible that the building will collapse upon itself. The building could be constructed of the best materials and assembled with the utmost care and still fail due to a weak foundation.



That's one description of a foundation that must be firm and perhaps another example could be marriage. You really need a firm foundation to have a successful marriage. What makes that

firm foundation? Trust, Honesty, Love, Respect, Care, Truth, Honor, Commitment, are a few of these foundations upon which a successful marriage must be built. Without these qualities a marriage will fall apart. No matter how strong you believe marriage is, it will also fall apart without and one of the above qualities.

So, the point that I am making is that many important parts of our lives are based upon a firm foundation. Without the strength that the basic principles give us we are likely to fail, collapse, or not succeed.

Luke 6:46-49

Why do you call me, "Lord, Lord", and do not do what I say? I will show you what he is like who comes to me and hears my words and puts them into practice. He is like a man building a house, who dug deep and laid the foundation on rock. When a flood came, the torrent struck the house but could not shake it, because it was well built. But the one who hears my words and does not put them into practice is like a man who built his house on the ground without a foundation. The moment the torrent struck that house, it collapsed

(Continued on next page)

A FIRM FOUNDATION

and its destruction was complete.

Jesus is comparing the solid foundation of a house to listening to and obeying His teachings. If a person listens to and practices the teachings of Christ, his foundation will remain firm and his life's work will be strong and succeed under all sorts of tragedy. His reward will surely be Heaven. However, if a person does not believe in the teachings of Christ, he cannot put them in action and his life will be without reward. The foundation given to us through the Bible gives us the solid basis for our life.

1 Corinthians 3:10-13

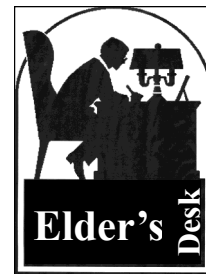
By the grace God has given me, I laid a foundation as an expert builder, and someone else is building on it. But each one should be careful how he builds. For no one can lay any foundation other than the one already laid, which is Jesus Christ. If any man builds on this foundation using gold, silver, costly stones, wood, hay or straw, his work will be shown for what it is, because the Day will bring it to light. It will be revealed with fire, and the fire will test the quality of each man's work. If what he has built survives, he will receive his reward. If it is burned up, he will suffer loss; he himself will be saved, but only as one escaping through the flames.

In this passage, Paul has written to the people

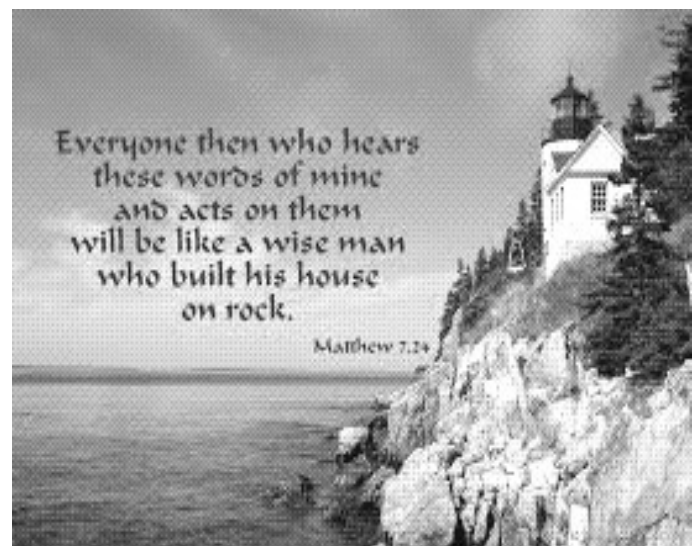
of Corinth. The foundation of the Church is Jesus Christ. Paul is saying that those who will build upon this foundation must do so with the correct doctrine and they must live according to the teachings of Christ. The Church in Corinth had many problems and Paul was trying to teach the Church members to be committed to Christ, to live their lives properly, and to help others do the same. He was instructing that a firm foundation must first be achieved...that is Jesus Christ. Secondly, the building (ministers, elders, worshippers) must be solidly built. The "solidly built" portion are the actions of the people that must follow the teachings of Christ.

A strong foundation is primary, and then the building must be constructed with the putting into use the teachings of Christ. With a weakness in either of these components the Church will not survive.

Bob Hettlinger



| | |
|---------|---|
| Connect | Published by: Sunny Place Church of God 901 E Oak St, Addison IL 60101 Church Office (630) 530-1830 Editor: Lynn Drury |
| | Senior Pastor: Peter Weber Treasurer: Glenda Kasza Elders: Sam Jacob, President Tim Kasza, Vice President Nona Koivula, Director Bob Hettlinger, Director Phyllis Clark, Director |



TLC

Together Loving Christ

Are you sharing in the exciting and spiritual blessings of studying God's Word and discovering how it applies to your contemporary life?

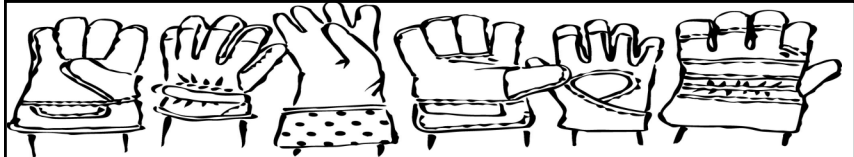
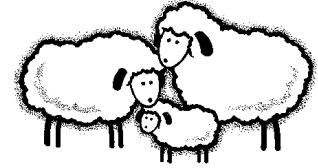
Join with us in our Adult Study Group at Sunny Place every Thursday at 7:00 p. m.

Grow in the Word!

Sunday Morning Worship 10:45 a.m.

Kid's Rock available
for children ages five to nine

Nursery Services Provided



Are You Able?

Church Work Camp

Thursday, Friday and Saturday

August 2nd, 3rd & 4th

8:30 a.m. - 4:30 p.m.

At Sunny Place

Visit us at: www.SunnyPlaceChurch.org



901 E. Oak Street, Addison, IL 60101

Connecting Families With The Love Of Christ

Minutes from the Elders Meeting. July 11, 2018

Attended by Pastor Pete Weber, Sam Jacob, Phyllis Clark, Tim Kasza, Bob Hettlinger, Glenda Kasza, Nona Koivula

Devotion and prayer: “For this reason I kneel before the Father, from whom his whole family in heaven and on earth derives its name. I pray that out of his glorious riches he may strengthen you with power through his Spirit in your inner being, so that Christ may dwell in your hearts through faith. And I pray that you, being rooted and established in love, may have the power, together with all the saints, to grasp how wide and long and high and deep is the love of Christ and to know this love that surpasses knowledge – that you may be filled to the measure of all the fullness of God.”
Ephesians 3:14-19

Ministry Reports

Treasurer: Budget bank balance as of July 10, \$2,108.73 Capitol Fundraising Campaign \$147,316, Giving for June \$6,819.67, Expenses for June \$9,941.81

Worship: There will be a Worship Team meeting Sunday, July 22nd.

Christian Education: Discipleship and Ephesians classes are going well.

Hospitality & Encouragement: Plans are being made to have a fellowship luncheon with people in our church.

Missions: Phyllis Clark has been doing research on mission trips that we might be able to do in the United States within the Church of God Global Strategy Ministry.

Prayer and Devotion: Sweet Hour of Prayer continues every third Sunday.

Stewardship & Support Services: There will be a Stewardship Work Camp, August 2, 3, and 4th. There will be a meeting to prepare projects for this three day event. Each day from 8:30AM to 4PM.

Ladies Ministry: This ministry will support the Stewardship Ministry with ladies volunteering for the work camp.

Evangelism and Outreach: There are 35 people registered for the Senior Luncheon to be held Saturday July 14.

Fellowship: The Creation Museum and Noah’s Ark trip was an exceptional experience for all who attended. The trip was well planned and organized.

Pastoral Counseling: Confidential Sessions as requested.

New and Old Business

- Ministry Team Restructuring Meetings. The consolidation of the ministry teams is being discussed with team leaders.
- There was discussion about a Policy and Procedure addition to the Sunny Place policy manual. A policy update was prepared and reviewed by the Elders. Phyllis Clark made a motion to accept the prepared Policy. Tim Kasza seconded the motion and it passed.

Next Elders meeting will be August 1.



Kid's

Connection

A Firm Foundation

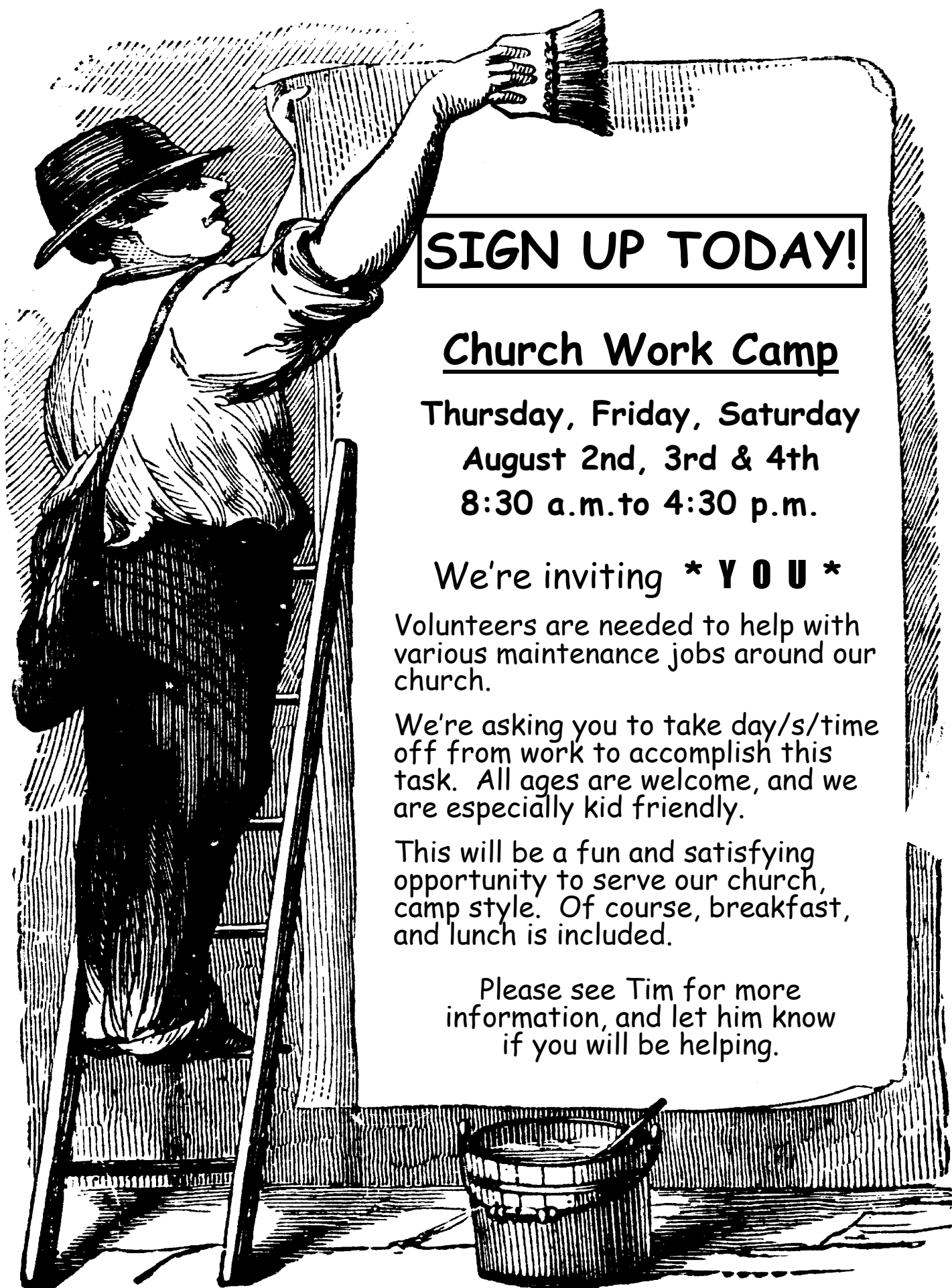
*It is by obeying Jesus' commandments
that we build our lives on a firm foundation.*

**JESUS
IS MY
ROCK**



Upon
this
ROCK
I
will
BUILD
my
CHURCH
Matthew 16:18

Color this picture



SIGN UP TODAY!

Church Work Camp

Thursday, Friday, Saturday

August 2nd, 3rd & 4th

8:30 a.m. to 4:30 p.m.

We're inviting *** YOU ***

Volunteers are needed to help with various maintenance jobs around our church.

We're asking you to take day/s/time off from work to accomplish this task. All ages are welcome, and we are especially kid friendly.

This will be a fun and satisfying opportunity to serve our church, camp style. Of course, breakfast, and lunch is included.

Please see Tim for more information, and let him know if you will be helping.



2nd Saturday Senior Luncheon

Saturday, August 11th, 11:30 a.m.

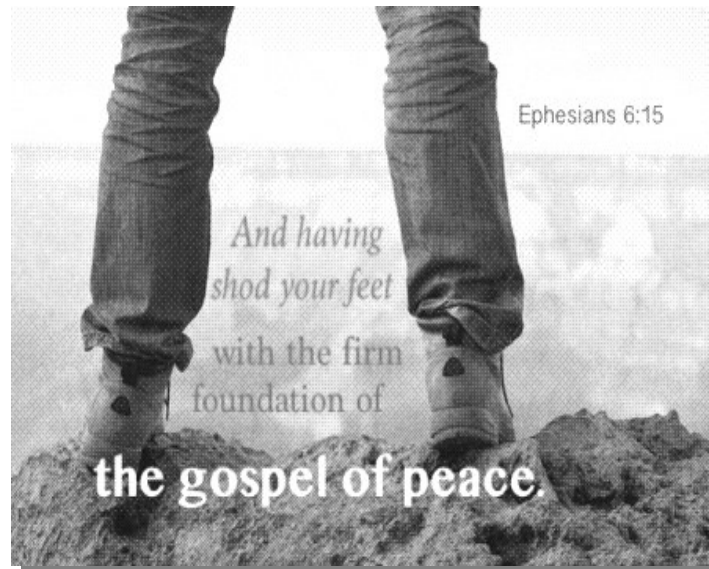
at Sunny Place Church

Please join us for a free Senior Luncheon!

Come be our guest for food, great speakers and activities.

Free event for Seniors 55 & up.

Space is limited so register now at 630/398-2314



Ephesians 6:15

And having shod your feet with the firm foundation of

the gospel of peace.

AFTERNOON OF PRAYER

Light lunch following

Sunday, August 19th,
12:30 p.m.

at Sunny Place Church


Sunday School Line-Up

Sunday School at 9:30 a.m.

“Discipleship”

Adult Bible Study

This class is essential for everyone - new believers, seasoned Christians, growing Christ followers.



Led by Pastor Pete

Children’s Classes

Led by Carla Weber

Nursery services are provided

Thursday Evenings

7:00 p.m.

at Sunny Place



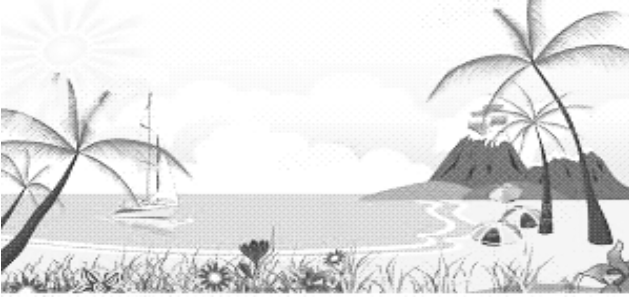

“Living Today in the Heavenly Realms”

A Bible Study
Through Paul’s letter to
the Ephesians

Led by Pastor Pete



August 2018

| Sun | Mon | Tue | Wed | Thu | Fri | Sat |
|--|-----|-----|--|--|---|--|
|  | | | 1 | 2 | 3 | 4 |
| | | | Elder's Meeting 7:00 p.m. at Sunny Place | Adult Bible Study 7:00 p.m. at Sunny Place | Church Work Camp Thursday, Friday & Saturday, 8:30-4:30 p.m. | |
| 5 | 6 | 7 | 8 | 9 | 10 | 11 |
| | | | | Adult Bible Study 7:00 p.m. at Sunny Place | | 2nd Saturday Senior Luncheon 11:30 a.m. at Sunny Place |
| 12 | 13 | 14 | 15 | 16 | 17 | 18 |
| Outreach Meeting 12:30 p.m. at Sunny Place | | | Stewardship Meeting 6:30 p.m. at Sunny Place | Adult Bible Study 7:00 p.m. at Sunny Place | | |
| 19 | 20 | 21 | 22 | 23 | 24 | 25 |
| Afternoon of Prayer, light lunch following 12:30 p.m. at Sunny Place | | | | Adult Bible Study 7:00 p.m. at Sunny Place | | |
| 26 | 27 | 28 | 29 | 30 | 31 | |
| | | | | |  | |